



3022



3062



3066

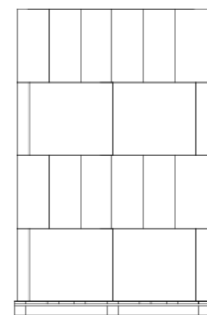
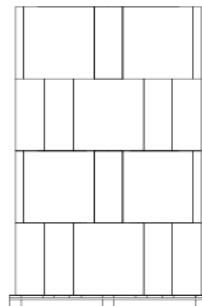
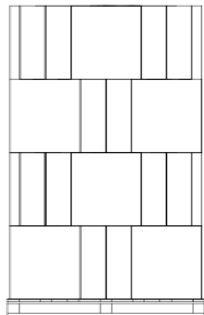
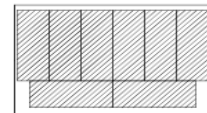
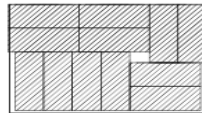
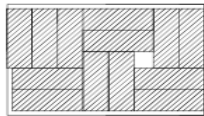
CATALOGO / CATALOGUE :	BERTANI
LINEA / RANGE:	Pompa a spalla / <i>Knapsack sprayers</i>
PRINCIPALI UTILIZZI / MAIN APPLICATIONS:	Disinfezione e disinfestazione degli ambienti. <i>Disinfection and disinfestation of environments.</i>

CODICE / REFERENCE	DESCRIZIONE / DESCRIPTION	CODICE A BARRE / BARCODE
3022 - Nyplon Piston	Olimpia 12	8005522005191
3062 - Nyplon Piston	Olimpia 15	8005522005214
3066 - Nyplon Piston	Olimpia 22	8005522005368

DATI TECNICI / TECHNICAL DETAILS	3022	3062	3066
MATERIALI PRINCIPALI IMPIEGATI MAIN MATERIALS USED	PE/PP/Acciaio PE/PP/Steel	PE/PP/Acciaio PE/PP/Steel	PE/PP/Acciaio PE/PP/Steel
GUARNIZIONI GASKETS	NBR	NBR	NBR
DIMENSIONI MAX cm MAX DIMENSIONS cm	38x15x51,5h	36,5x16,5x51,5h	44,5x18,5x51,5h
PESO +/-5% kg WEIGHT +/-5% kg	2,8	2,9	3,3
CAPACITA' CONTENITORE LORDO lt CAPACITY OF CONTAINER GROSS lt	11,600	14,250	20,250
CAPACITA' CONTENITORE NETTO lt CAPACITY OF CONTAINER NET lt	11	14	19
ADATTO PER UNA SUPERFICIE ~ m ² APT FOR ~ m ²	500 ÷ 1000	500 ÷ 1500	500 ÷ 2000
EROGAZIONE IN ORIZZONTALE cm LENGTH OF RANGE WITH LONG JET cm	900	900	900
EROGAZIONE IN VERTICALE cm HEIGHT OF RANGE WITH LONG JET cm	450	450	450
AMPIEZZA MAX DEL GETTO WIDE ANGLE MAX	60°	60°	60°
CAPACITA' DI UNA POMPATA cc LEVERAGE cc	65	65	65
QUANTITA' EROGATA cc/min - 3 bar QUANTITY SPRAYED cc/min - 3 bar	620	620	620
CAPACITA' DEL POMPANTE cc CAPACITY OF PUMP PISTON cc	600	600	600
RESIDUO NEL FLACONE cc RESIDUAL IN THE CONTAINER cc	≤250	≤250	≤250
PRESSIONE DI UTILIZZO bar MEDIUM PRESSURE bar	2 ÷ 5	2 ÷ 5	2 ÷ 5

DOTAZIONE DI SERIE / STANDARD EQUIPMENT	3022	3062	3066
TUBO RETINATO ANTIGELO RETINADED HOSE	Ø 6,3/11,5 - 120 cm	Ø 6,3/11,5 - 120 cm	Ø 6,3/11,5 - 120 cm
CINGHIE REGOLABILI cm ADJUSTABLE STRAPS cm	130 x 3	130 x 3	130 x 3
SPALLACCI cm PADDED SHOULDER STRAP cm	no	no	no
LANCIA PUNTO cm PUNTO LANCE cm	65	65	65
PROLUNGA CON RACCORDO cm EXTENSION WITH CONNECTION cm	no	no	no
PORTALANCIA LANCE HOLDER	no	no	no
FOGLIO ISTRUZIONI INSTRUCTION	si	si	si

LOGISTICA / LOGISTIC	3022	3062	3066
IMBALLO PRIMARIO <i>MAIN PACKAGING</i>	Scatola flexografica <i>Flexo box</i>	Scatola flexografica <i>Flexo box</i>	Scatola flexografica <i>Flexo box</i>
PEZZI CONTENUTI <i>PCS X CARTON</i>	1	1	1
VOLUME m ³ <i>VOLUME</i>	0.0353	0.0399	0.0527
MISURA CONFEZIONE cm <i>EXTERNAL PACKING SIZE cm</i>	43.5x15.5x53h	43x17.5x53h	51.5x19.5x53h
PESO CONFEZIONE +/-5% kg <i>WEIGHT BOX +/-5% kg</i>	3.3	3.4	3.9
NUMERO PEZZI PER PALLET <i>PIECES FOR PALLET</i>	52	48	32
NUMERO CONF. PER PALLET <i>CARTONS FOR PALLET</i>	52	48	32
NUMERO CONF. PER RIGA <i>CARTONS FOR ROW</i>	13	12	8
DIMENSIONI PALLET cm <i>PALLET DIMENSIONS cm</i>	80x120,5x226h	80x121x226h	80x120x224h



3022

3062

3066